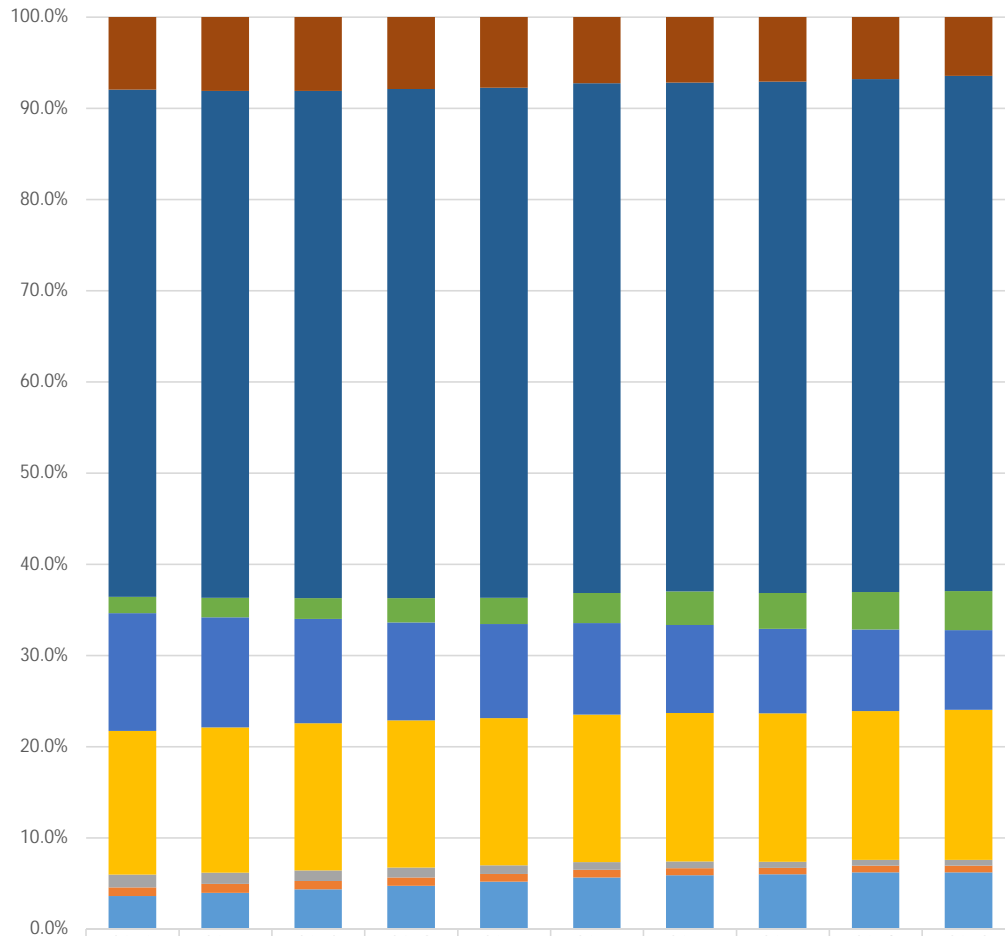


Portland Public Schools

Student Enrollment by Race/Ethnicity and Historically Underserved Races, 2010-2019

Percent of District Enrollment



	2010	2011	2012	2013	2014	2015	2016	2017	2018	2019
Asian Not HU	8.0%	8.1%	8.1%	7.9%	7.8%	7.3%	7.2%	7.1%	6.8%	6.5%
White Not HU	55.6%	55.6%	55.6%	55.8%	55.9%	55.9%	55.8%	56.1%	56.3%	56.5%
Multiple_Asian/White Not HU	1.8%	2.2%	2.3%	2.7%	2.9%	3.3%	3.7%	3.9%	4.1%	4.3%
Black HU	12.9%	12.1%	11.4%	10.7%	10.3%	10.0%	9.7%	9.3%	8.9%	8.7%
Latino HU	15.8%	15.9%	16.1%	16.2%	16.2%	16.2%	16.3%	16.3%	16.3%	16.5%
Native American HU	1.4%	1.2%	1.2%	1.1%	0.9%	0.9%	0.7%	0.6%	0.6%	0.6%
PacificIslander HU	1.0%	1.0%	0.9%	0.9%	0.8%	0.8%	0.8%	0.7%	0.8%	0.7%
Multiple Other Ancestries HU	3.6%	4.0%	4.3%	4.7%	5.2%	5.6%	5.9%	6.0%	6.2%	6.2%

